



C6 v3.0 1500 lumens

ILLUMINATE YOUR WORKSITES

THE HIGH-PERFORMANCE RECHARGEABLE
WORK LIGHT



1500 lumens



300 meters



54 hours



Magnetic Base



Type-C

FENIX
LIGHTING FOR EXTREMES

1,500 lumens **300** meters **54** hours

PRO POWER TO HOLD

Luminus SST40 LED
Running 50,000 hours

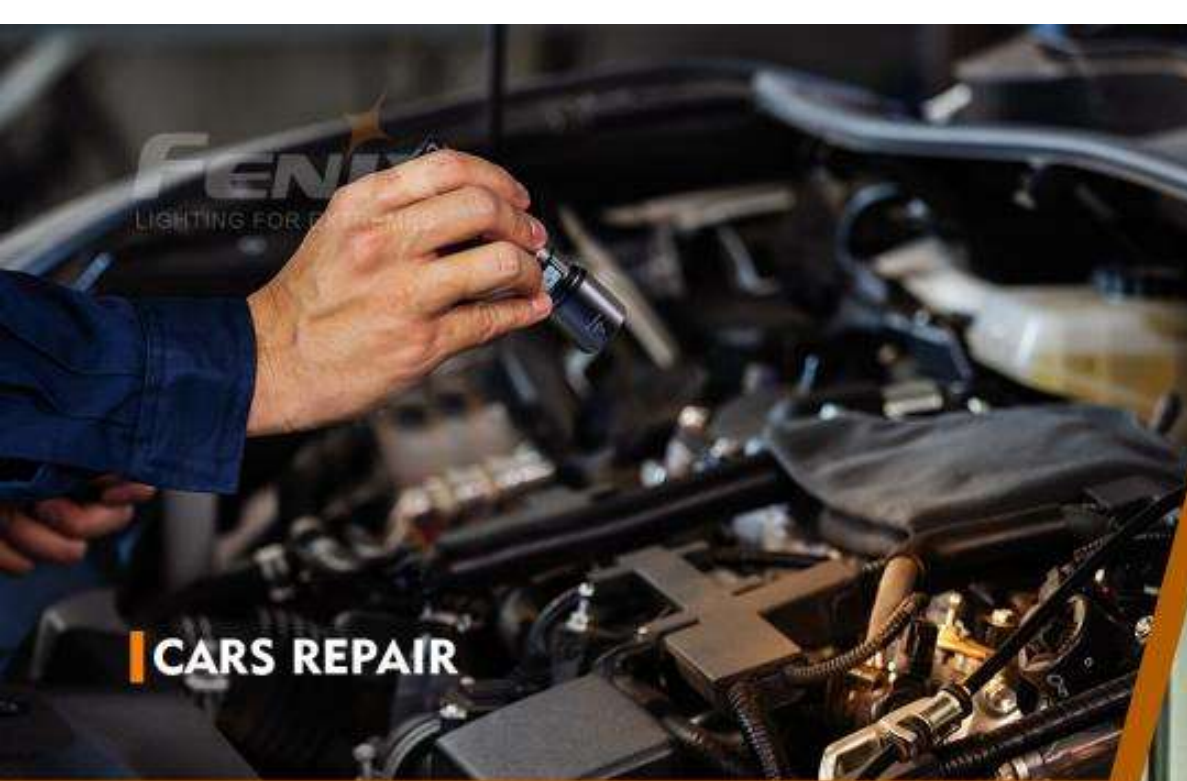


FENIX
LIGHTING FOR EXTREMES

EASILY ATTACH VIA TAIL MAGNET

Hands-free, snag-free using





CARS REPAIR



NIGHT PATROL



CIRCUITS MAINTENANCE

FENIX
LIGHTING FOR EXTREMES

TYPE-C PORT
2 HOURS
TO GET FULLY CHARGED



2600 MAH

Included Fenix ARB-L18-2600 Li-ion
Rechargeable Battery



BIGGER LANYARD HOLE SECURE POCKET CLIP

Delivering easy-to-carry and user-friendly experience





A RUGGED, RELIABLE TORCH TO COUNT ON

A6061-T6 Aluminum alloy body
HAIII anodic oxide finish



1m Drop Test



Intelligent Overheat Protection



IP68 Ratings



Intelligent Downshift



FENIX
LIGHTING FOR EXTREMES

IP68 RATINGS

Peace of mind in any weather conditions

- * Work normally for 4 hours at 2 meters under water. According to the ANSI/PLATO FL1 standard, the above specifications are from the results produced by Fenix through its laboratory testing.



6 OUTPUTS OPERATED BY ONE BUTTON

Adjust output for optimal lighting
in every worksite

Press and hold for 0.5 s : on/off
Press and hold for 1.2 s : output selection



General Mode (Single click to change output)



Flash Mode (Single click to change output)








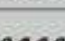
BATTERY INDICATOR CLEAR & DIRECT

Single click the button to know battery levels



TECHNICAL PARAMETERS

Size: 5.24" x 1.26" x 0.91" / 133 x 32 x 23 mm Weight: 3.63 oz / 103 g (excluding battery)

ANSI/PLATO FL1	GENERAL MODE				FLASH MODE	
	TURBO	HIGH	MED	LOW	STROBE	SOS
 OUTPUT	1500 lumens	400 lumens	100 lumens	30 lumens	1500 lumens	100 lumens
 RUNTIME	1 hour*	4 hours	17 hours	54 hours	/	/
 DISTANCE	300 meters	165 meters	85 meters	45 meters	/	/
 INTENSITY	22500 candela	6800 candela	1800 candela	520 candela	/	/
 IMPACT RESISTANCE	1 meter					
 SUBMERSIBLE	IP68					

Note: According to the ANSI/PLATO FL1 standard, the above specifications are from the results produced by Fenix through its laboratory testing using one Fenix ARB-L18-2600 rechargeable Li-ion battery under the temperature of 21±3°C and humidity of 50% - 80%. The true performance of this product may vary according to different working environments and the actual battery used.

*The Turbo output is measured in a total of runtime including output at reduced levels due to temperature or protection mechanism in the design under a good heat dissipation environment.